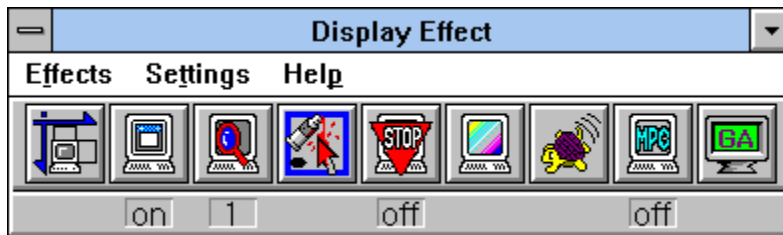


Display Effect



Menu



Shifts Display Area

Shifts display area vertically and horizontally.



Auto Scroll

Toggles auto scroll ON/OFF.



Quick Zoom

Zooms in/out display area.



Cursor Color

Changes mouse cursor's color, size, and shape.



Scroll Lock

Toggles scroll-lock ON/OFF.



Adjusts Color Ratio

Adjusts color ratio of display area.



Slow-motion Mode

Decelerates screen drawing.



MPC Mode

Toggles multimedia PC mode ON/OFF.



Alter Resolution

Changes display resolution, the number of colors, and mode.

Shifts Display Area

Shifts position of display area.

There are 4 buttons, one for each direction used to adjust the display area. The display area can be shifted both vertically and horizontally by clicking direction buttons with a mouse or pressing cursor (direction) keys on a keyboard.

Pressing Ctrl+Break keys simultaneously returns display to the previous setting.

Auto Scroll

Auto Scroll Should be used while either Big Screen (refer to "Alter Resolution") or Quick Zoom is in use.

With Auto Scroll being ON, the activated window will be positioned in the center of the display as you click of resize it.

Note: the mouse cursor will be positioned in the center of the window.

Quick Zoom

Zooms in/out of the display area.

Use the left mouse button to enlarge, or the right mouse button to reduce the display area. Equivalent key combinations for enlargement and reduction are Shift+Ctrl+3 and Shift+Ctrl+4, respectively.

Note: When the magnification is already at its maximum, clicking the left mouse button reduces the displayed image to its normal size. In addition, when the magnification is already at its minimum, clicking the right mouse button enlarges the displayed image to its maximum size.

There are only two phases for a resolution of 640x480:[Normal:640x480, Quadruple:320x240.] Other resolutions have three phases:[Normal, Double:640x480, Quadruple:320x240.]

Cursor Color

Changes color, size and shape of the mouse cursor.

There are 20 colors to choose from for both foreground and background. Foreground color can be selected by clicking left mouse button whereas background colors can be selected by clicking right mouse button.

Scroll Lock

Toggles scroll-lock ON/OFF.

While Big Screen or Quick Zoom is in use, the screen scrolling can be locked with this feature. The Scroll Lock does not affect either Auto Scroll or Key Scroll.

When the Display Effect is out of displayed area, it can be appeared in sight by pressing a combination of keys:Shift+Ctrl+[-].

Adjusts Color Ratio

Adjusts color ratio of display area.

Color level is expressed with a graph. Input color level is represented by the X axis and output color level is represented by the Y axis. Bias level affects the color level selected. Gain controls a ratio of color levels expressed by both Input and Output.

This feature only affects monitor displayed. Printer and file outputs remain unaffected.

If displayed images merge into the background color, Ctrl+Break Key combination can be used to return to the default color settings.

This feature is not available with 64K or 16M colors.

Slow-motion Mode

Decelerates screen drawing.

This feature lets you slow the screen drawing rate with a value ranging from 0 to 100. The larger the value, the slower the speed.

MPC Mode

Toggles multimedia PC mode ON/OFF. The resolution will be 640x480 with this mode being ON.

This feature is useful when displayed multimedia application image is too small.

Alter Resolution

Changes display (Windows) resolution, the number of colors, and mode. Any changes made will not be in effect until clicking the (Windows) restart button.

Shortcut

Defines shortcut key.

Click buttons to define a Shortcut Key.

Key Scroll

The mouse cursor can be moved by pressing cursor keys.

Settings

Amount of scroll: Define the amount of key scroll.

Default.

256 colors 8 dot

64K colors 4 dot

16M(24) colors 8 dot

16M(32) colors 2 dot

DPMS Settings

VESA DPMS: When this feature is enabled, a compliant monitor conserves electrical energy.

Stand-by
Suspended
Off

Highlight the timer boxes one at a time to specify the values (in minutes). If no keyboard or mouse activity is detected, Stand-by mode is activated first, followed by Suspended mode, and Off mode.

Standby is the first level of power conservation. The monitor is ready if activity is detected.

The monitor conserves more energy at this level than at Standby.

At this level of DPMS, the monitor is at the highest level of energy conservation.

